

Optimize business productivity and accelerate innovation.

DIGITAL TRANSFORMATION - REAL TIME DELIVERY



WWW.PUTITFORWARD.COM

CONNECTED ENTERPRISE - CRITICAL FOR DIGITAL

"The success of any digital transformation effort, therefore, depends on the ability to create a 'connected business' at scale.", Jeanne Ross, former researcher, MIT

IT has increasing demands to INNOVATE but there are several things that are getting in the way - the most important of these - being the lack of an enterprise architecture approach. Jeanne Ross says "Winners in digital disruption have integrated channels, seamless end-to-end transactions, real understanding of customer data, and real

tight security. And these all require an organization with enterprise architecture." she further explains that to have true digital transformation, a company must have a "connected enterprise" that can do three critical things:

*"Enterprise architects as digital transformers", CIO.com 6/26/18



Factors holding back organizations from digital transformation - according to Jeanne Ross - MIT

- Enterprise silos limiting efforts to collaborate
- Lack of precise data for powerful predictive analytics
- Rigid code impeding agility and new business capabilities



CONNECT ALL
Cloud, On-Prem and data stores

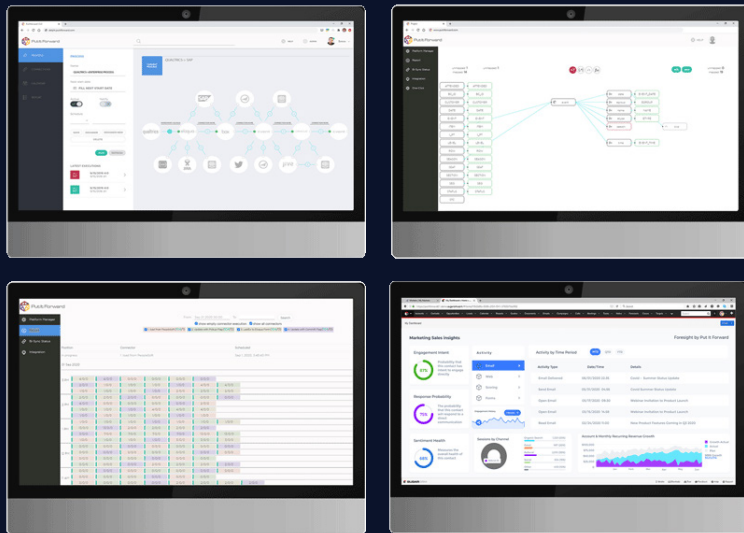


ENGAGE EVERYWHERE
Automate business processes and deliver



RUN ANYWHERE
Deploy apps public cloud, hybrid or on-premises

WHAT WE DELIVER



01 Design - All in One

Shift your data integration needs with an easy drag and drop designer interface for cloud and on-prem. Manage and modify any component in one seamless and secure.

02 Orchestrate - Beyond Integration

Automated code free cross-channel execution across the enterprise. Amplify and speed integration by encompassing data mapping and orchestration

03 Active Governance - Live Management

Active governance allows you to address data integrity and quality in process. Easy to manage with real time visibility into what data is moving; where and when.

04 Insight - Embedded and Predictive

Algorithmic and AI/ML driven insights embedded within the data or user direct.

A connected enterprise is paramount to digital transformation success but how do you get there?

The solution already exists with the Put It Forward Contextual Data Platform. A single solution for the configured world. A solution that helps IT teams reduce cost and increase capabilities.

02



MILLIONS IN LICENSE AND SERVICE REVENUE



20% OPERATIONAL TIME SAVINGS



6X INCREASE IN CUSTOMER SATISFACTION



2X PRODUCTIVITY GAIN FOR TECHNICAL TEAM

DELIVERING SUCCESS
CROSS ORGANIZATION

"PIF had us connected and data moving in a day, we were blown away" - Richard Lewis, Chief Analytics Officer



CASE STUDY

Results



24 hour connectivity turn around

Pre-built integrations and the PIF Platform Builder and Integration Designer made this possible.



Millions in license and service revenue saved.

Reduced overall technology cost by a factor of 10x - increasing quality of data



Leveraged existing tools and data

Analysts could use their own tools and replicate data without a quality loss.

+\$MILLIONS

license and service revenue saved

Regus: The Challenge

Turn around a failed and stalled project with high level executive visibility - reduce cost using existing tools

Regus wanted to stop customer leakage through improvement of real time location based analytics. Customers needed to be served at point of purchasing decision with best offer and fulfilled immediately.

They had already spent months of spend on what they thought was advanced integration tools - with no avail. With a failing project and integration tools that had consumed almost all of the budget

they needed a solution that would use their existing tools and connect cross cloud systems including Oracle Eloqua, Salesforce CRM, Amazon AWS and Microsoft SQL server.

Put It Forward was selected because of it's comprehensive tools set and the ability to connect the enterprise with a fast turnaround.



Cross cloud hybrid systems



High volume data throughput



Embedded real time decision analytics

